



GMT MONTHLY MEMBERSHIP PROGRESS REPORT

Results as of: 2/29/2024

Multiple District 29

LOCATION: WEST VIRGINIA

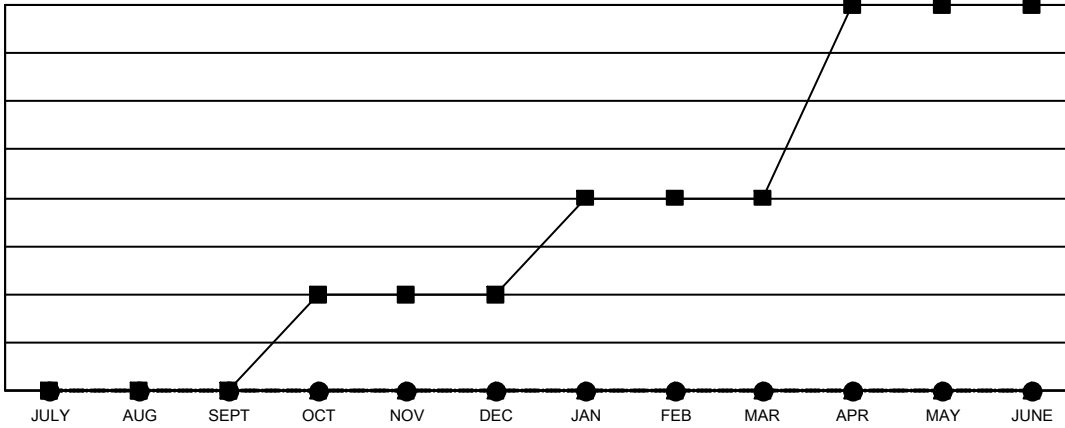
GMT: OPEN

GMT CA 1

Clubs			
RESULTS FOR 2023-2024			
QUARTER	NEW CLUB GOAL	NEW CLUBS	DROPPED CLUBS
JULY/AUG/SEPT	0	0	0
OCT/NOV/DEC	1	0	1
JAN/FEB/MAR	1	0	1
APR/MAY/JUNE	2	0	0

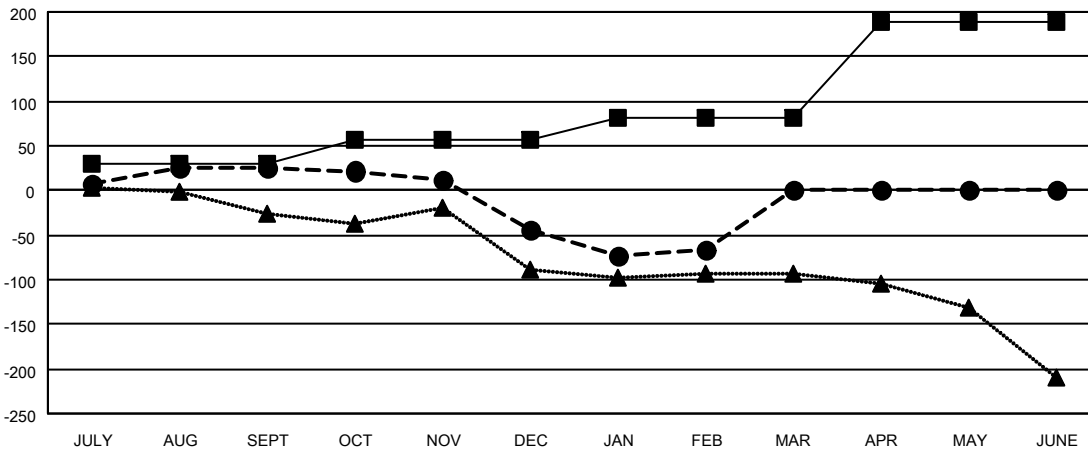
Members			
RESULTS FOR 2023-2024			
QUARTER	MEMBER GROWTH NET GOAL	MEMBER GROWTH ACTUAL	DROPPED MEMBERS ACTUAL (including transfers)
JULY/AUG/SEPT	29	78	46
OCT/NOV/DEC	28	81	124
JAN/FEB/MAR	24	55	76
APR/MAY/JUNE	108	0	0

GOALS AND ACTUAL NEW CLUBS CUMULATIVE



- - CURRENT YEAR GOALS FOR NEW CLUBS
- - CURRENT YEAR ACTUAL NEW CLUBS
- ▲ - LAST YEAR ACTUAL NEW CLUBS

GOALS AND ACTUAL MEMBERS CUMULATIVE



- - MEMBER GROWTH NET GOAL
- - MEMBER GROWTH ACTUAL
- ▲ - LAST YEAR MEMBERSHIP ACTUAL

DROPPED CLUBS: 2	70 CLUBS OF 151 ADDED 1 OR MORE NEW MEMBERS	GENDER DISTRIBUTION MALE 2,066 (62.10%) FEMALE 1,261 (37.90%)
DROPPED MEMBERS DECEASED 52 CLUB CANCELLED 0 OTHER 194 TOTAL 246	CLICK HERE FOR CUMULATIVE MEMBERSHIP DATA	TOTAL FAMILY UNIT MEMBERS 983 FAMILY MEMBERS PAYING HALF DUES 502